



SUBMITTAL DATA

GWH09ATCXB-D3DNA1A/I / GWH09ATCXB-D3DNA1A/O
9000 BTU/H Wall Mounted Heat Pump System

Job Name

Location

Date

Purchaser

Engineer

Submitted to

For

Unit Designation

Schedule No.



YAP1F7F



GWH09ATCXB-D3DNA1A/I



GWH09ATCXB-D3DNA1A/O



XE71 (Optional)

GENERAL FEATURES

- AHRI Certificate: [209271943](#)
- High Efficiency DC Inverter Technology
- Compact and Quiet Design
- Wireless Remote with LCD Display
- Wired Controller Options
- 10 Years Parts Warranty.
- Wi-Fi Included
- Low Ambient Cooling down to 0°F (Range 0°F to 115°F)
- Low Ambient Heating down to -13°F (Range -13°F to 75°F)
- Coil (Indoor and Outdoor) Copper Tube / Aluminum Fin
- Blue Colored Fin - 500 Hrs Salt Spray Tested

SPECIFICATIONS, FEATURES & FUNCTION SUMMARY

SPECIFICATIONS GWH09ATCXB-D3DNA1A/O

System Type HEAT PUMP

SYSTEM PERFORMANCE

Cooling	Min - Max	Btu/h	2800 - 10300
	Capacity @95°F	Btu/h	9100
Heating	Min - Max	Btu/h	2200 - 12200
	Capacity @5°F	Btu/h	
	Capacity @17°F	Btu/h	6000
	Capacity @47°F	W	10000
SEER2			19.5
EER2			11.3
HSPF/HSPF2			10/8.8
COP @5°F			
COP @47°F			3.8
Cooling Temperature Range	°F		0 - 115
Heating Temperature Range	°F		-13 - 75
Refrigerant Type			R410A

INDOOR UNIT GWH09ATCXB-D3DNA1A/I

Air flow (Min-Max)	CFM		159 - 353
Sound Pressure Level (Min - Max)	dB(A)		26 - 41
Dehumidification	pt/hr		1.69
External Dimensions (WxHxD)	in		32-7/8 x 10-7/8 x 7-7/8
Package Dimension (W x H x D)	in		35-1/4 x 13-5/8 x 10-11/16
Net Weight	lbs		19.8
Gross Weight	lbs		24.3

OUTDOOR UNIT GWH09ATCXB-D3DNA1A/O

Compressor Type GREE G-10 / 2 - STAGE INVERTER

Sound Pressure Level	dB(A)		51
External Dimensions (W x H x D)	in		28-13/16 x 21-7/8 x 13
Package Dimension (W x H x D)	in		31-5/16 x 24-3/4 x 14-13/16
Net Weight	lbs		56.2
Gross Weight	lbs		61.7

REFRIGERANT PIPING

Refrigerant Charge - R410A	oz		24.7
Additional Charge	oz/ft		0.2
Line Set Size (Liquid - Gas) - Flared Connections	in		1/4 - 3/8
Pre-Charge Length	ft		25
Pipe Length (Min - Max)	ft		10 - 66
Max. Pipe Elevation	ft		39

ELECTRICAL

Power Supply			208 - 230V / 1Ph /60Hz
Voltage Range (Min - Max)	VAC		187 - 253
Rated Current - Cooling	A		6.5
Rated Current - Heating	A		7
MCA	A		9
MOCP	A		15
Suggested Breaker Size	A		15
Main Power Wire Size	AWG		Per Local Code
Interconnecting Wire Size	AWG		14 / 4

FEATURES & FUNCTIONS SUMMARY GWH09ATCXB-D3DNA1A/O

SYSTEM FEATURES

Inverter Type	G10
Ultra Low Frequency Torque Control	Yes
Power Factor Correction	Yes
Compressor Type	High Efficiency Rotary
Refrigerant Type	R410A
Basepan With Electric Heater	Yes
Compressor With Electric Heater	Yes
Outdoor Fin Coating (Color:Blue)	Acrylic-Resin/Anti-Corrosive
Intelligent Defrosting	Yes
Force Defrosting	Yes
Intelligent Preheating	Yes
Low Voltage Startup	Yes
Memory/Power Failure Recovery	Yes
Self Diagnosis	Yes
Wired Controller Interface (XE71)	Yes
WiFi Included	Yes
Indoor Fan Type	Crossflow
Multi Fan Speeds	4 Speeds
Indoor Unit Display	Yes
Auxiliary Electrical Heater	No
Ventilation (Outdoor Air)	No

REMOTE CONTROLLER FUNCTIONS

Auto Mode	Yes
Auto Fan	Yes
Manual Horizontal Swing	Yes
Auto Swing (Vertical Auto Swing)	Yes
Clock on Remote Controller	Yes
Dry Mode	Yes
Dry Anti-Mildew (X-Fan) Mode	Yes
Energy Saving Mode	Yes
Dirty Filter Alert	No
I Feel Function	Yes
Lock on Remote Controller	Yes
Quiet Mode	No
Room Temperature Display	Yes
Sleep Mode	Yes
Timer Mode	Yes
Turbo Mode	Yes
Display On/Off Control	Yes
Freeze Guard Mode (46°F)	Yes
Display On/Off Control	Yes

DIMENSIONS

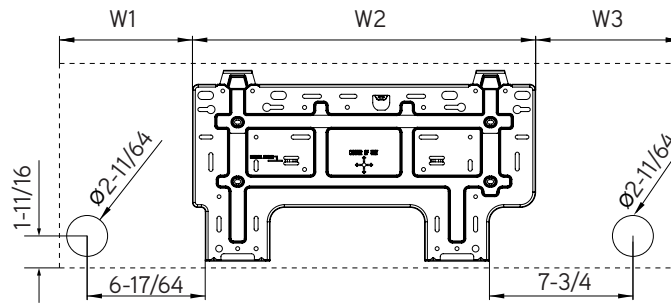
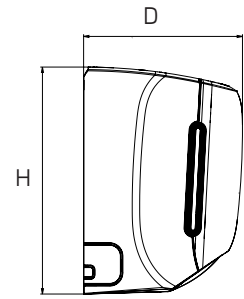
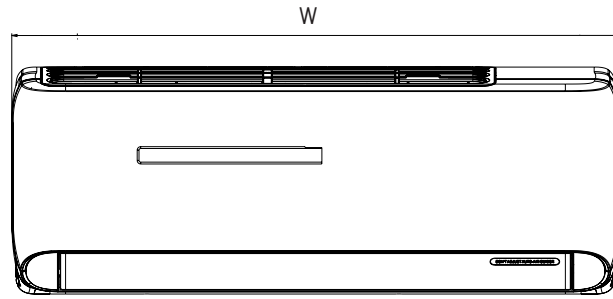
INDOOR UNIT

Unit: inch

GWH09ATCXB-D3DNA1A/I

DIMENSIONS

W	32-7/8
H	10-7/8
D	7-7/8
W1	7-3/64
W2	18-5/32
W3	7-11/16



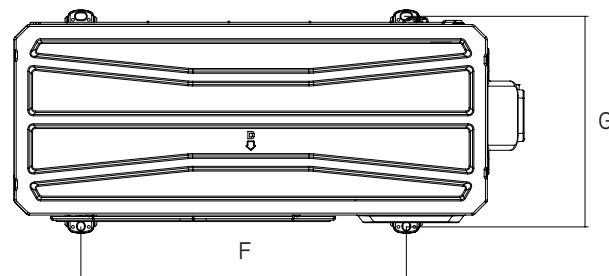
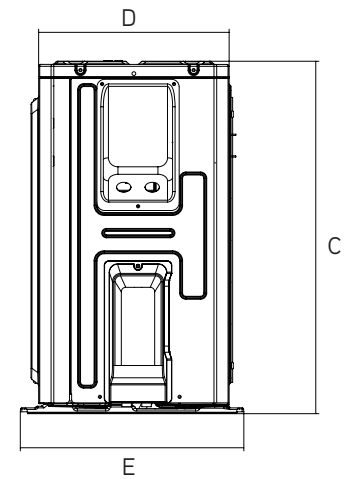
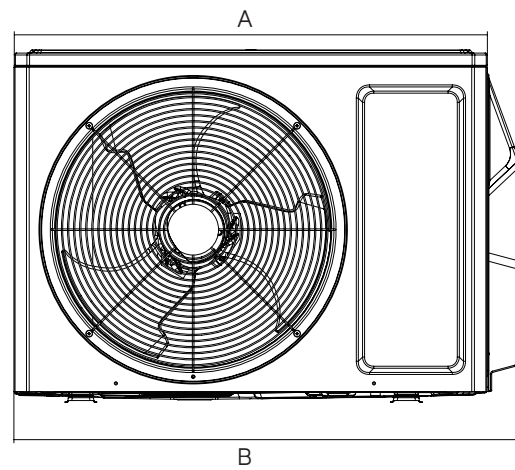
OUTDOOR UNIT

Unit: inch

GWH09ATCXB-D3DNA1A/OA

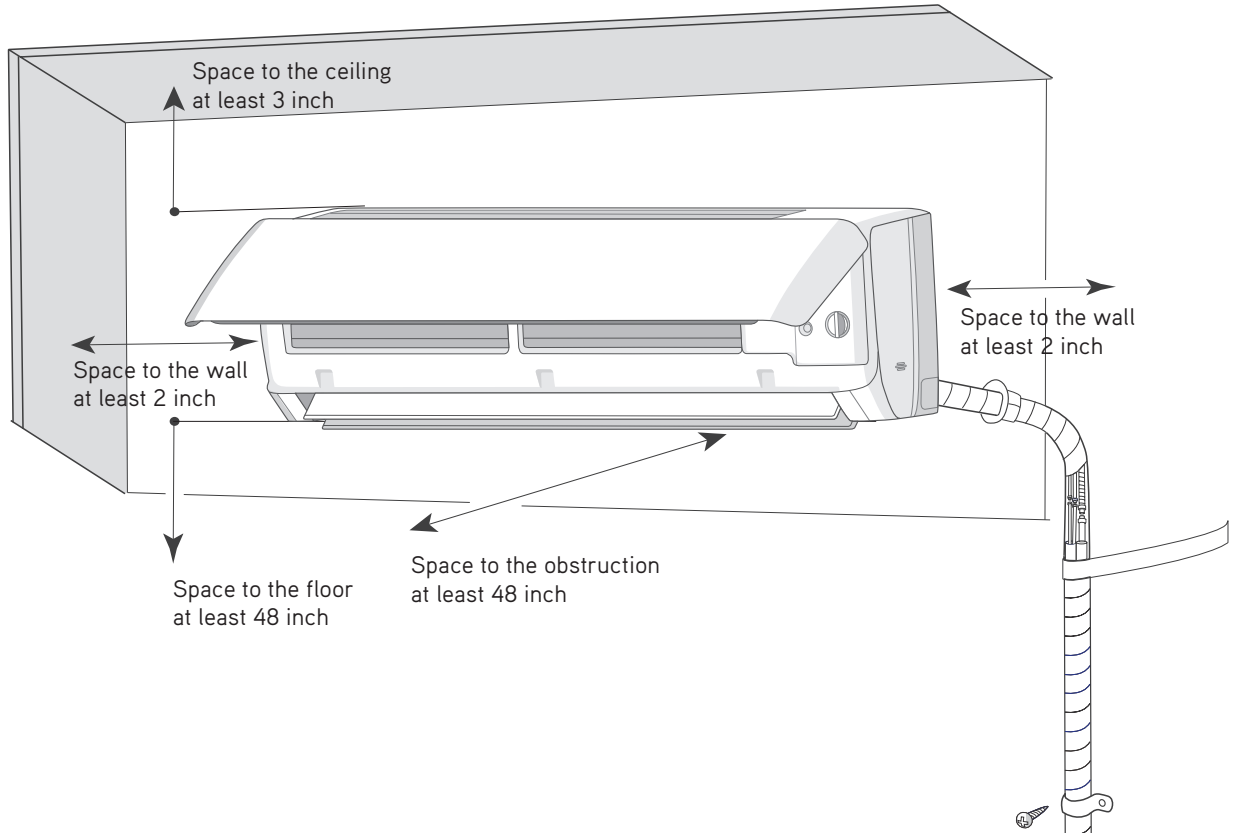
DIMENSIONS

A	26-37/64
B	28-13/16
C	21-7/8
D	11-7/32
E	13
F	17-29/32
G	12-13/64

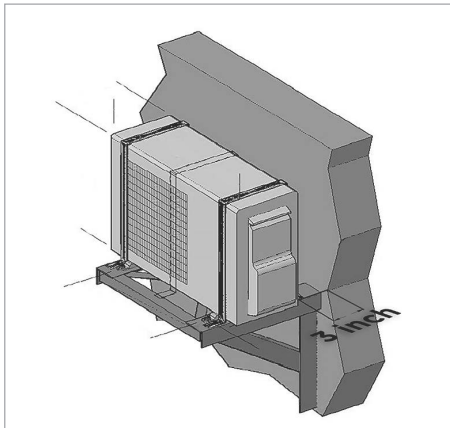


CLEARANCES

INDOOR UNIT Minimum clearance



OUTDOOR UNIT Minimum clearance



NOTE:

If bottom of the unit is free of airflow obstructions similar to the mounting bracket figure, the clearance to the wall on the back can be reduced to 3 inches.

