



24000Btu/h	A-Coil
Location: _____ Engineer: _____ Submitted to: _____ Submitted by: _____ Reference: _____	Approval: _____ Date: _____ Construction: _____ Unit #: _____ Drawing #: _____

<b>Set Code</b>	22023110001108
Indoor unit code	22023111000510
Outdoor unit code	22023116000161
<b>Set Model</b>	
Indoor unit model	ACI-BCO24CP17
Outdoor unit model	ACI-AUO24SHP-M
<b>Certified</b>	AHRI  UL 



**SYSTEM PERFORMANCE DATA**

<b>Power supply</b>		
Normal Operational Voltage	(V, Ph, Hz)	208/230V, 1Ph, 60Hz
Voltage Range	(V)	187-253
<b>Electrical</b>		
Minimum circuit ampacity	(A)	20.5
Max.fuse	(A)	35.0
Connection wiring		18AWG
<b>Cooling</b>		
Rated Capacity	(Btu/h)	24000
Capacity Range	(Btu/h)	10000-28400
Power Input (Max)	(W)	2247(380-2600)
Rated current	(A)	9.43(2.33-10.68)
SEER2	(Btu/W)	16.8
EER2	(Btu/W)	10.7
<b>Heating at 47F</b>		
Rated Capacity	(Btu/h)	25000
Capacity Range	(Btu/h)	9600-33400
Power Input (Max)	(W)	2233(510-3160)
Rated current	(A)	9.30(3.01-12.92)
HSPF2-4	(Btu/W)	9.5
HSPF2-5	(Btu/W)	7.7
COP	W/W	3.28
<b>Heating at 5F</b>		
Capacity	(Btu/h)	20000
COP	W/W	1.95
<b>REFRIGERANT PIPE DATA</b>		
Design pressure	(PSIG)	550/340
Refrigerant Type	(Oz)	R410A/102.32
Refrigerant precharge	(ft)	25.0
	(m)	7.6
Additional charge for each ft	(oz/ft)	0.69
	(g/m)	65.0
Liquid side/ Gas side	(inch)	3/8" / 3/4"
	(mm)	φ9.52 / φ19
Max. pipe length	(ft)	164.0
	(m)	50.0
Max. difference in level	(ft)	82.0
	(m)	25.0
Connection method	Indoor	Braze
	Outdoor	Flared to braze
Indoor(cooling)	(Deg. °F / °C)	62-90 / 17-32
Indoor( heating)	(Deg. °F/ °C)	32-86 / 0-30
Outdoor(cooling)	(Deg. °F/ °C)	5-122 / -15-50
Outdoor(heating)	(Deg. °F/ °C)	-22-75 / -30-24

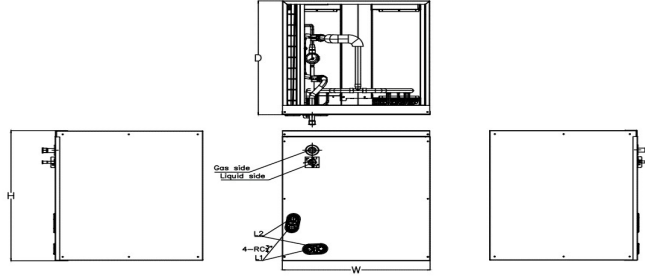
**INDOOR UNIT DATA**

<b>Throttle</b>		TXV for Cooling
<b>Indoor fan motor</b>		
Type		---
Model		---
Qty		---
Input	(W)	---
RLA	(A)	---
LRA	(A)	---
Winding Resistance	(Ω)	---
Capacitor	(uF)	---
Speed(Hi/Mi/Lo)	(r/min)	---
<b>Air flow &amp; Noise level</b>		
Indoor air flow (Hi/Med/Lo)	(CFM)	---
Indoor noise level (Hi/Med/Lo)	[dB(A)]	---
<b>Dehumidification</b>		
	(Pint/H)	---
<b>Indoor unit</b>		
Dimension (WxDxH)	(inch)	17.52x20.98x17.99
	(mm)	445x533x457
Packing(WxDxH)	(inch)	19.88x25.59x19.29
	(mm)	505x650x490
Net/Gross weight	(lbs.)	42.77/52.03
	(kg)	19.4/23.6

**OUTDOOR UNIT DATA**

<b>Compressor</b>		
Type		KTM240D57UMT
Model		Twin-ROTARY
Brand		GMCC
Capacity	(Btu/h)	26408.9
Input	(W)	2085
Rated current (RLA)	(A)	-
Refrigerant oil/oil charge	(ml)	ESTER OIL VG74 670
<b>Throttle</b>		
		EEV for heating
<b>Outdoor fan motor</b>		
Model		ZKFN-120-8-2
Qty		1
Input	(W)	--
RLA	(A)	1.35
Speed	(r/min)	950/700/500/400
<b>Air flow &amp; Noise level</b>		
Outdoor air flow (Max.)	(CFM)	3000.0
Outdoor noise level	[dB(A)]	63.5
<b>Outdoor unit</b>		
Dimension (WxDxH)	(inch)	37.24x16.14x31.89
	(mm)	946x410x810
Packing (WxDxH)	(inch)	42.91x19.69x34.84
	(mm)	1090x500x885
Net/ Gross weight	(lbs.)	136.69/145.50
	(kg)	62/66

Indoor unit dimension



Model	Unit	Dimensions (mm)			Drain hole	
		W	D	H	L1	L2
12K-24K	mm	445	533	457	Main drain hole	Overflow drain hole
	Inch	17 1/2	21	18		
30K-48K	mm	533	533	609	Main drain hole	Overflow drain hole
	Inch	21	21	24		
60K	mm	622	533	711	Main drain hole	Overflow drain hole
	Inch	24	21	28		

Outdoor unit dimension

